

# NCMTA Piano Performance Festival 2018

Please find the complete rules and regulations online at

[http://ncmta.org/images/PianoPerfFest\\_Regulations.pdf](http://ncmta.org/images/PianoPerfFest_Regulations.pdf)

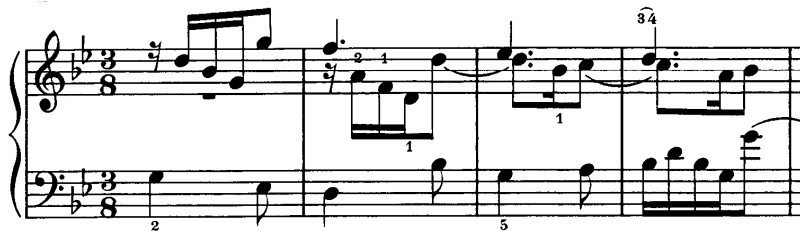
In the event that a printed edition might list a different title, opus or work number, please use the incipit listed for each title to verify the intended selection. For titles listing a specific key, only that key will be accepted.

---

## SENIOR A I

---

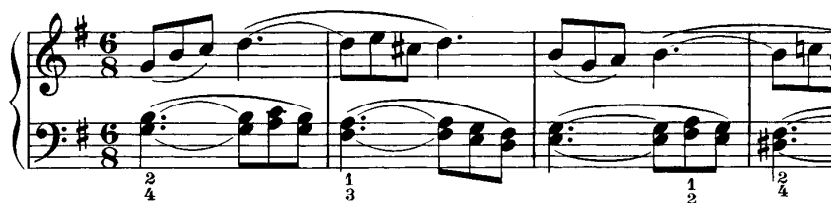
1. Bach, Johann Sebastian                      Sinfonia # 11 in G minor BWV. 797  
A.S.E.



2. Bach, J.S.    Prelude in F Major, BWV 928  
A.S.E.  
Encore! Book 3 / Magrath / Alfred p. 6



3. Beethoven, Ludwig van                      Bagatelle in G Major, Op. 126, No. 5  
A.S.E.



4. Handel, George F.

Sonata in A Major

The Baroque Spirit, Book 2 / Bachus / Alfred p. 20

Musical score for Handel's Sonata in A Major, measures 1-4. The score is in treble and bass clefs with a key signature of two sharps (F# and C#). The tempo is marked *f* (forte) in the first measure and *p* (piano) in the fourth measure. Fingerings are indicated with numbers 1-5. An accent mark (*acc.*) is placed over the second measure. The piece is in 3/4 time.

5. Haydn, Franz Joseph

Sonata in e minor, Hob. XVI:34, mvt. 1

Masterwork Classics, Level 10 / Magrath / Alfred p.

Single Sheet / Henle

A.S.E.

Musical score for Haydn's Sonata in e minor, measures 1-4. The score is in treble and bass clefs with a key signature of one sharp (F#). The tempo is marked *p* (piano). Fingerings are indicated with numbers 1-5. The piece is in 6/8 time.

6. Telemann, Georg Philipp

Allemande from Suite in A Major

The Baroque Spirit, Book 2 / Bachus / Alfred p. 33

A.S.E.

Musical score for Telemann's Allemande, measures 1-4. The score is in treble and bass clefs with a key signature of two sharps (F# and C#). The tempo is marked *mf* (mezzo-forte). Fingerings are indicated with numbers 1-5. The piece is in 3/4 time.

7. Mozart, W.A.

mvt. 2: Adagio from Sonata in F, K. 280

A.S.E.

Musical score for Mozart's Adagio, measures 1-4. The score is in treble and bass clefs with a key signature of three flats (Bb, Eb, and Ab). The tempo is marked *f* (forte) in the first measure and *p* (piano) in the third measure. A trill (*tr*) is indicated in the first measure. Fingerings are indicated with numbers 1-5. The piece is in 3/4 time.

8. Scarlatti, Domenico

Sonata in b minor, K. 27, L. 449

Sonatas, Vol. 4 / Scarlatti / Henle

Ninety Sonatas, Vol. 1 / Scarlatti ed.:Hashimoto / Dover

A.S.E.

Musical score for Scarlatti's Sonata in b minor, K. 27, L. 449. The score is in treble and bass clefs, 3/4 time, with a key signature of one flat (B minor). The right hand features a melodic line with a fermata and a five-fingered scale-like passage. The left hand has a rhythmic accompaniment with a double bar line and a two-fingered scale-like passage.

---

SENIOR A II

---

1. Albeniz, Isaac

Malaguena, from Espana, Op. 165, No. 3

A.S.E.

Musical score for Albeniz's Malaguena, from Espana, Op. 165, No. 3. The score is in treble and bass clefs, 3/8 time, with a key signature of one sharp (F# major). The tempo is marked 'Allegretto'. The right hand has a melodic line with a fermata and a triplet. The left hand has a rhythmic accompaniment with a 'staccato' marking and a triplet.

2. Chopin, Frederic

Nocturne in e minor, Op. 72, No. 1 (posth.)

A.S.E.

Musical score for Chopin's Nocturne in e minor, Op. 72, No. 1 (posth.). The score is in treble and bass clefs, 3/4 time, with a key signature of one sharp (F# major). The tempo is marked 'Andante' with a quarter note equal to 69. The right hand has a melodic line with a fermata and a triplet. The left hand has a rhythmic accompaniment with a 'p' marking and a triplet.

3. Scriabin, Alexander

Prelude in g minor, Op. 11, No. 22

A.S.E.

Musical score for Scriabin's Prelude in g minor, Op. 11, No. 22. The score is in treble and bass clefs, 3/4 time, with a key signature of two flats (G minor). The right hand has a melodic line with a fermata and a triplet. The left hand has a rhythmic accompaniment with a 'p' marking and a triplet.

4. Heller, Stephen

Warrior's Song in d minor, Op. 45, No. 15

Applause!, Book 2 / Olson / Alfred p. 28

Masterwork Classics Level 8 / Magrath / Alfred p. 44

Single Sheet / Alfred

Musical score for 'Warrior's Song in d minor, Op. 45, No. 15' by Stephen Heller. The score is in 3/4 time and d minor. It features a right-hand melody with dynamic markings of forte (f) and sfz (sf) and a left-hand accompaniment with chords. Fingerings are indicated for the right hand.

5. MacDowell, Edward

Shadow Dance, Op. 39, No. 8

Classics for Adv. Pianists, MacDowell, Book 2 / Bachus / Alfred p. 21

Single Sheet / Alfred

Musical score for 'Shadow Dance, Op. 39, No. 8' by Edward MacDowell. The score is in 2/4 time and D major. It features a right-hand melody with dynamic markings of fortissimo (ff) and leggierissimo, and a left-hand accompaniment. The piece is marked 'Allegrissimo'. Fingerings and triplets are indicated.

6. Mendelssohn, Felix

Duetto in A flat Major, Op. 38, No. 6

A.S.E.

Musical score for 'Duetto in A flat Major, Op. 38, No. 6' by Felix Mendelssohn. The score is in 6/8 time and A-flat major. It features a right-hand melody with dynamic markings of piano (p) and p3, and a left-hand accompaniment with triplets. Fingerings are indicated.

7. Sibelius, Jan

Romance in D flat Major, Op. 24, No. 9

Applause! Book 2 / Olson / Alfred, p. 52

Single Sheet / Alfred

Musical score for 'Romance in D flat Major, Op. 24, No. 9' by Jan Sibelius. The score is in 3/4 time and D-flat major. It features a right-hand melody with dynamic markings of piano (p) and mp, and a left-hand accompaniment. The piece is marked 'espressivo'. Fingerings and triplets are indicated.

8. Sibelius, Jan **Valsette from Pensees lyriques, Op. 40, No. 1**

Beyond Romantic Spirit, Book 1 / Bachus / Alfred p. 6

Favorite Classics, Book 2 / Lancaster / Alfred p. 47

Premier Piano Course Masterworks, Level 6 / Lancaster / Alfred p. 32

EKR Vol. 8 / Hinson / Alfred p. 74

mp

(a) 5 1 2 2

9. Lyadov, Anatol **Prelude in E Major, Op. 24, No. 1**

Preludes, Trifles and Other Pieces / Lyadov / ABRSM

Lento  $\text{♩} = 60$

p

---

## SENIOR A III

---

1. Debussy, Claude **Girl with the Flaxen Hair**

Melodious Masterpieces, Book 3 / Magrath / Alfred, p.

Selected Works / Snell / Kjos

Piano Repertoire, Romantic & 20th, Level 9 / Snell / Kjos, p. 56

Single Sheet / Henle, Durand, Alfred, HL

p sans rigueur

(a) 5 3 2 1 1 3 5 5

2. Dello Joio, Norman **Sonata No. 3, mvt. 4**

Sonata No. 3 / Dello Joio / CF

p e secco

3. Prokofiev, Serge

Visions Fugitives, Op. 22, No. 3

A.S.E.

*p*

4. Shostakovich, Dmitri

Three Fantastic Dances, Op. 5, No. 1

Masterpieces with Flair, Book 3 / Magrath / Alfred, p. 66

A.S.E.

*p leggiero*

5. McHugh, Jimmy; arr. by John Salmon

I'm in the Mood for Love

Jazz Standards arranged for Solo Piano by John Salmon / Lytabel, p. 12

*legato*

*pedal as needed*

6. Bennett, Richard Rodney

Little Elegy

New Classics to Moderns Third Series, Book 3 / Yorktown, p. 28

Single Sheet / Novello

*Poco lento* (♩ = 56)      *poco sost.*      *a tempo*

*p*      *cant. espr.*

*con ped.*

7. Armstrong, June

Castle Ward - Temple Dancer in Blue

Strangford Sketchbook / Armstrong / Pianissimo Publishing, p. 26

With elegance and a hint of swing ♩ = c.80 - 90

*p* *mp*

*With pedal*

8. Lecuona, Ernesto

La Comparsa from Danzas Afro-Cubanas

A.S.E.

**Moderato**

From far away *ppp* *il basso sempre marcato*

*ppp* *il basso sempre marcato* *(simile)*

1 3 2 3 2

Imitation of Tambor (Small Drum)